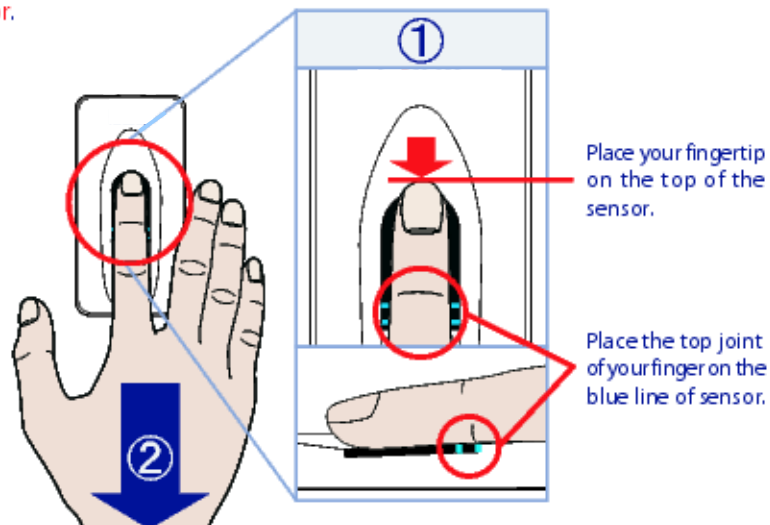


Your TimeIPS biometric fingerprint reader has several position and speed sensors that detect the contact status and swipe speed of your finger. The last sensor is the image capturing sensor that reads the fingerprint. For that reason, it is essential that you place your whole finger covering the entire surface of the sensor and maintain light pressure and a constant speed through the entire swiping process in order to get the best possible fingerprint read.

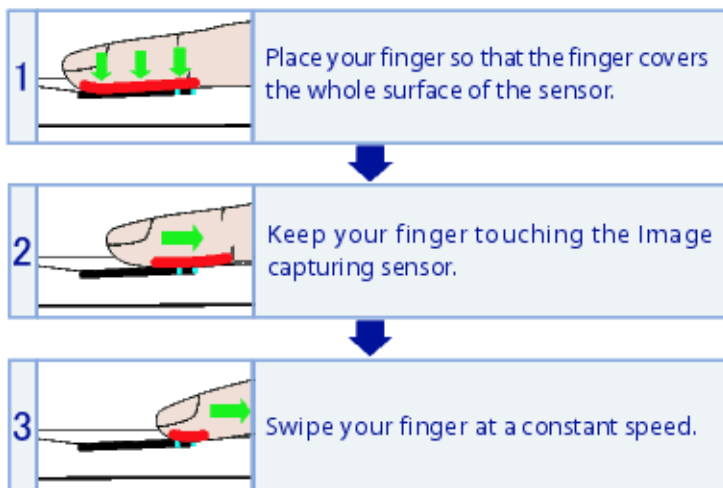
Troubleshooting Fingerprint Result	Possible Cause
Image is blurred or lacks detail	<p>You may have pressed too hard. This can affect the sensor's ability to read your fingerprint or even cause permanent damage to the sensor.</p> <p>Be sure to pull your hand straight toward your body. Any deviation will cause a blurry print.</p> <p>Your finger may be too dirty. Please wipe finger and try again.</p>
Image is shortened or too small	<p>Be sure to press finger lightly on the sensor and slide your whole finger over the sensor at a constant speed.</p>
Image is missing the complete fingerprint (or V-shaped)	<p>Open your hand and place your whole hand on the sensor so that it covers the entire area of the sensor. The sensor cannot read only your fingertip.</p>
Swipe attempt only resulted in a banded image	<p>Do not roll finger off the sensor as your swipe toward your body</p>
Fingerprint looks good until blurred bottom trailing off	<p>Do not push your finger forward on the sensor before pulling toward your body</p>
Image is a solid black mass	<p>Your finger is most likely too wet. Please dry your finger and try again</p>
Image is wavy or blurry on one side	<p>Do not place the side of your finger on the sensor. Please ensure that your whole finger covers the entire area of the sensor.</p>

- How to swipe your finger -

- ① Open your hand and place the top joint of your finger on the blue line of the sensor.



- ② Press your finger slightly on the sensor and slide your hand at a constant speed toward your body.



Examples of captured fingerprint images

To improve the accuracy of authentication, please enroll fingerprint data in a similar manner to what is shown in the **Good example** below.



Good Example



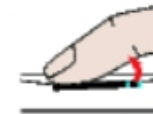
The image contains a whole fingerprint image with no distortion or missing data.



The image is missing the end



Only the fingertip was touching the sensor while swiping.



Place the top joint of finger on the sensor and then swipe. Ensure that finger is touching the sensor while swiping finger.



The image is missing the fingertip



The finger was tilted up while swiping.



Ensure that the fingertip is touching the sensor, relax your finger and swipe your finger again.



The image is distorted



The finger was not swiped in a straight line.



Open your hand, place a finger on the sensor and slide your finger and your whole hand in a straight line.



The image is compressed



The finger was not swiped at a constant speed.



Swipe your finger at a constant speed.