

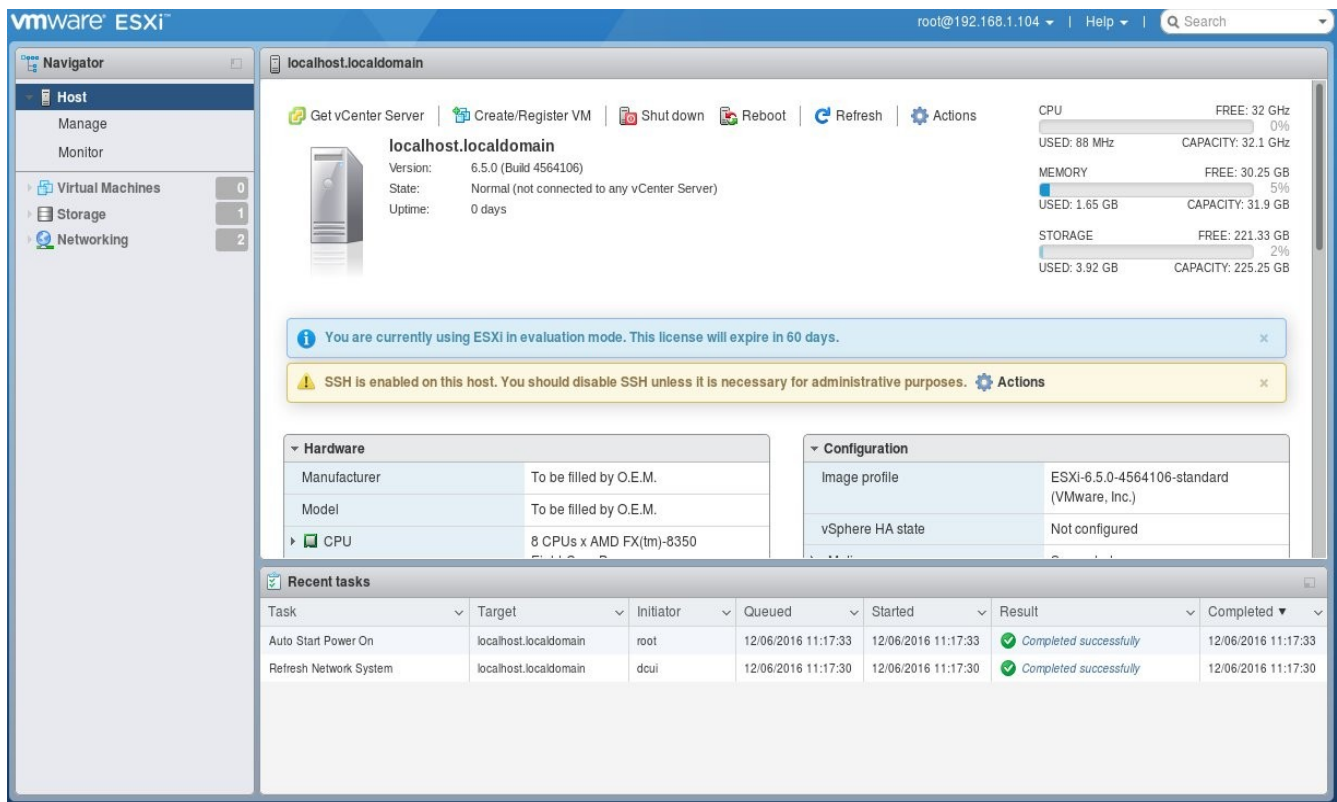
The deployment steps in this document were performed in VMware ESXi version 6.5. If you have a different version, the deployment steps may vary.

If you have not already obtained your virtual machine image file, please perform the following:

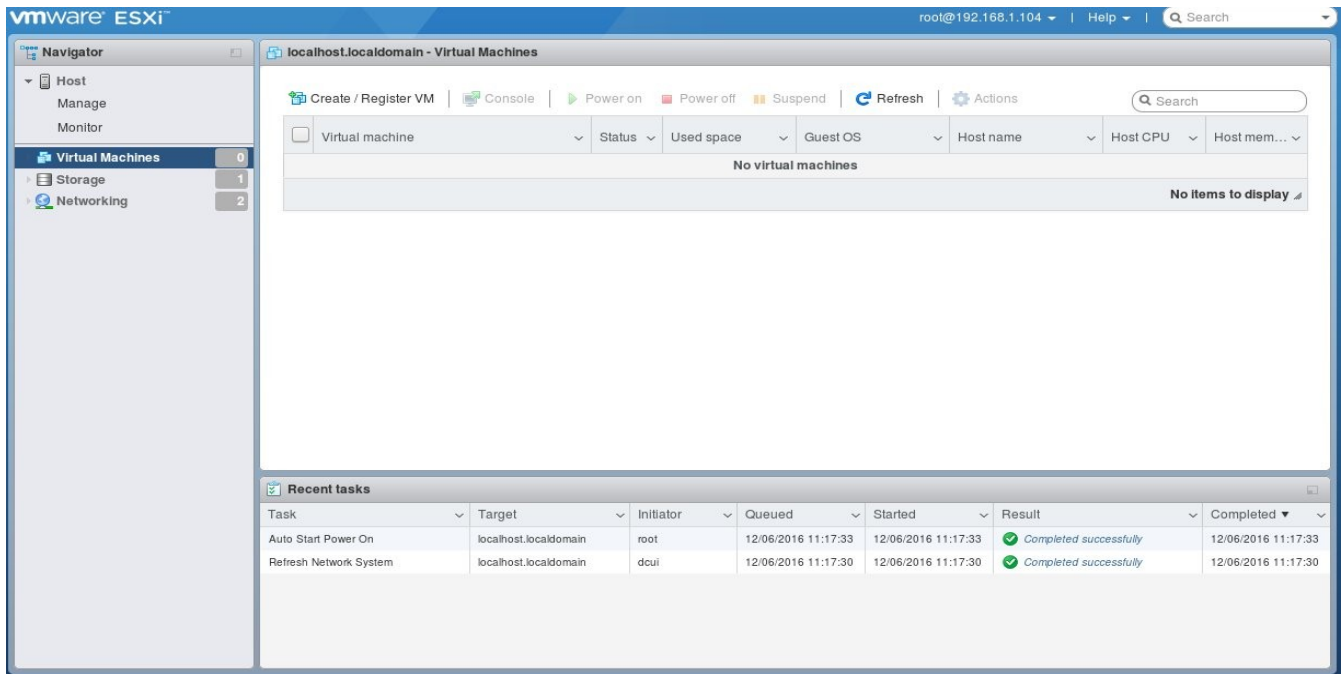
- Navigate to www.timeips.com/downloads
- Enter the access code you received via email and click on Submit
- Right click on the link provided and select “Save Link As . . .”
- Unzip the file you just downloaded

Log into your ESXi host system.

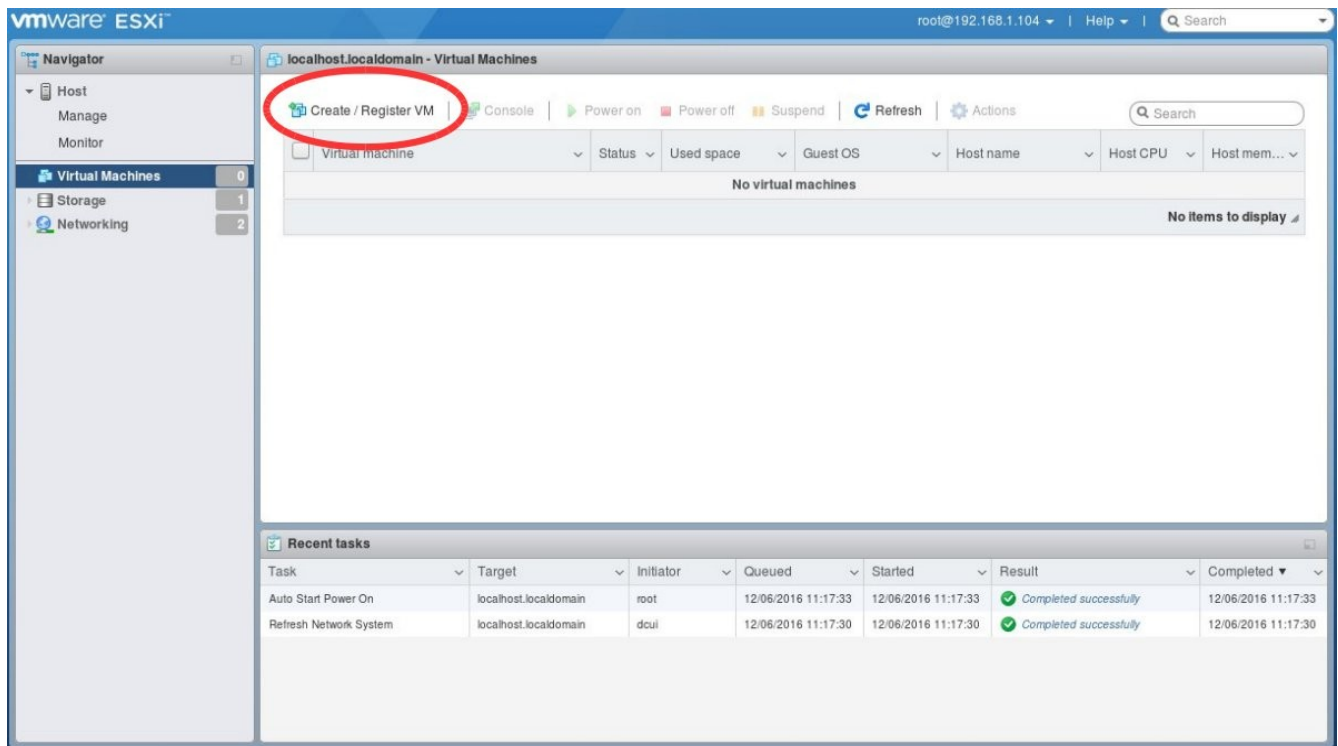
If you are using ESXi version 6.5, you should see a screen similar to the following.



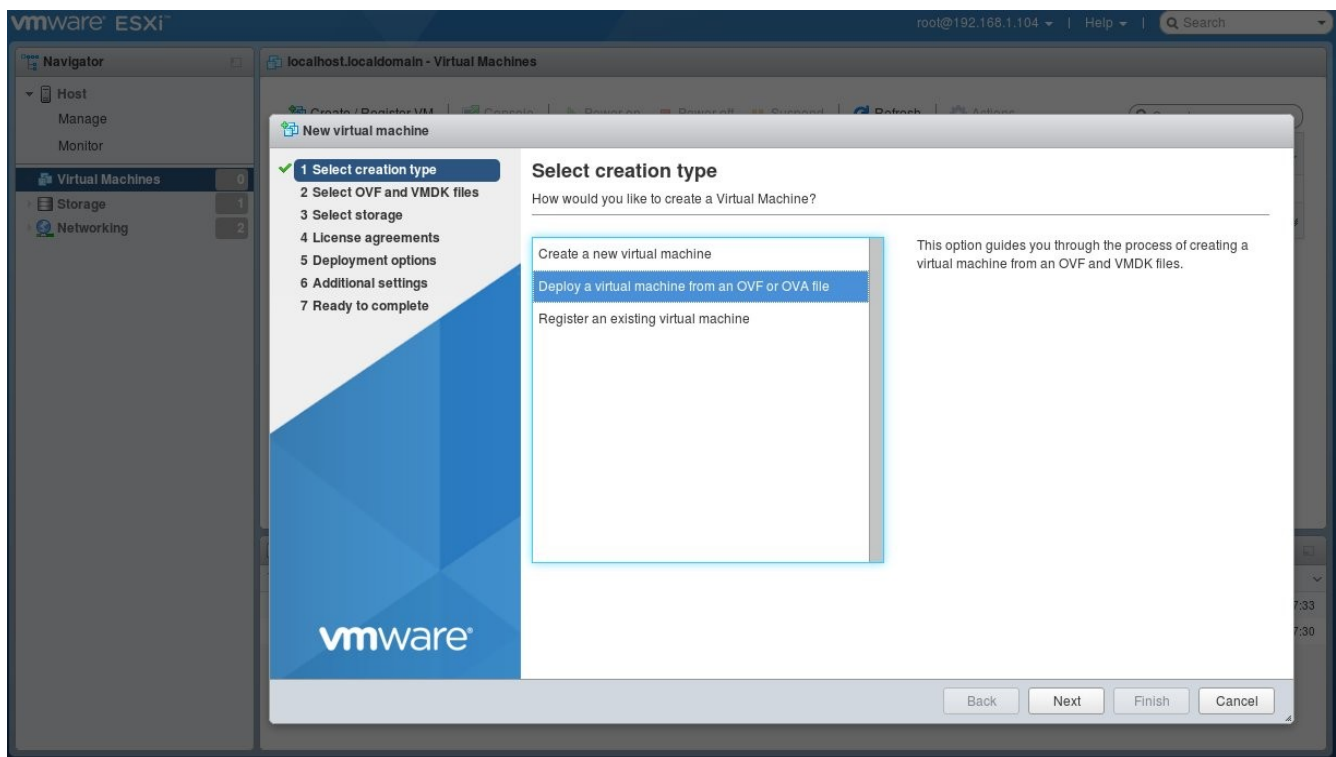
Select Virtual Machines on the left hand side of the screen.



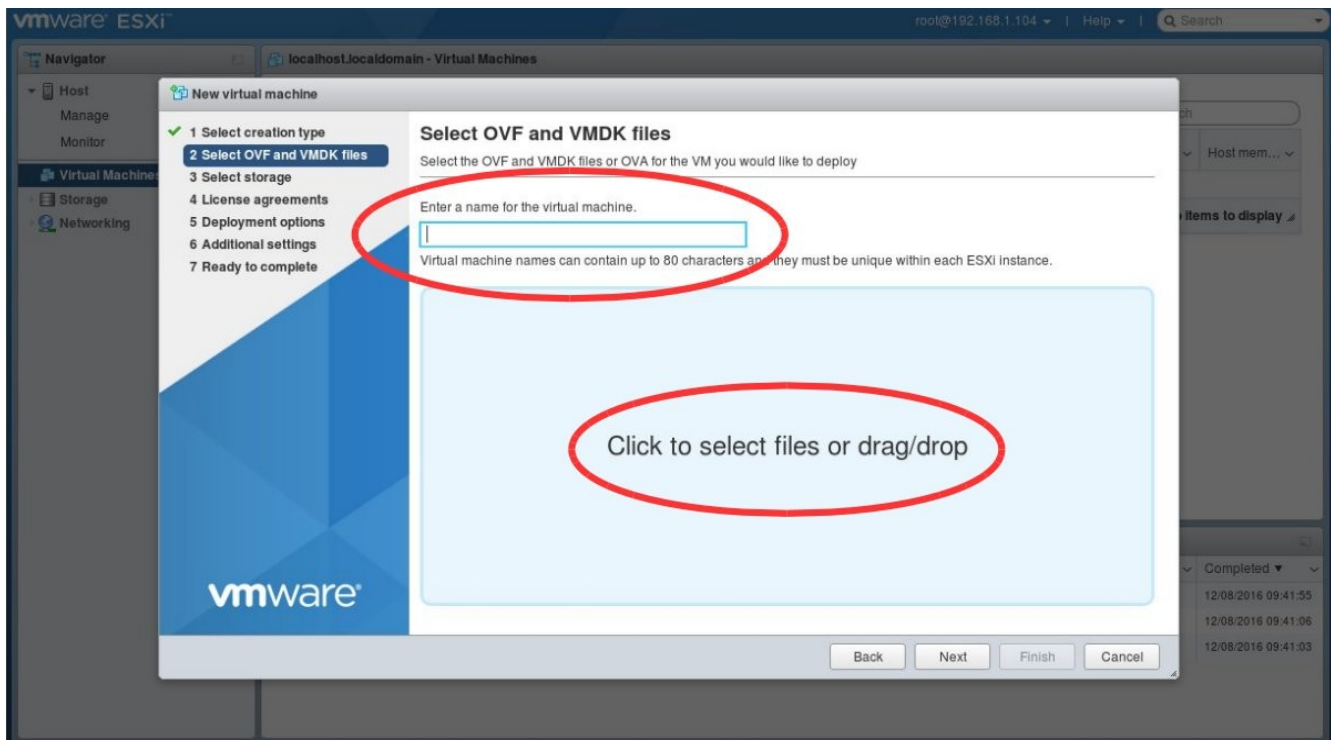
Select Create/Register VM near the top of this screen.



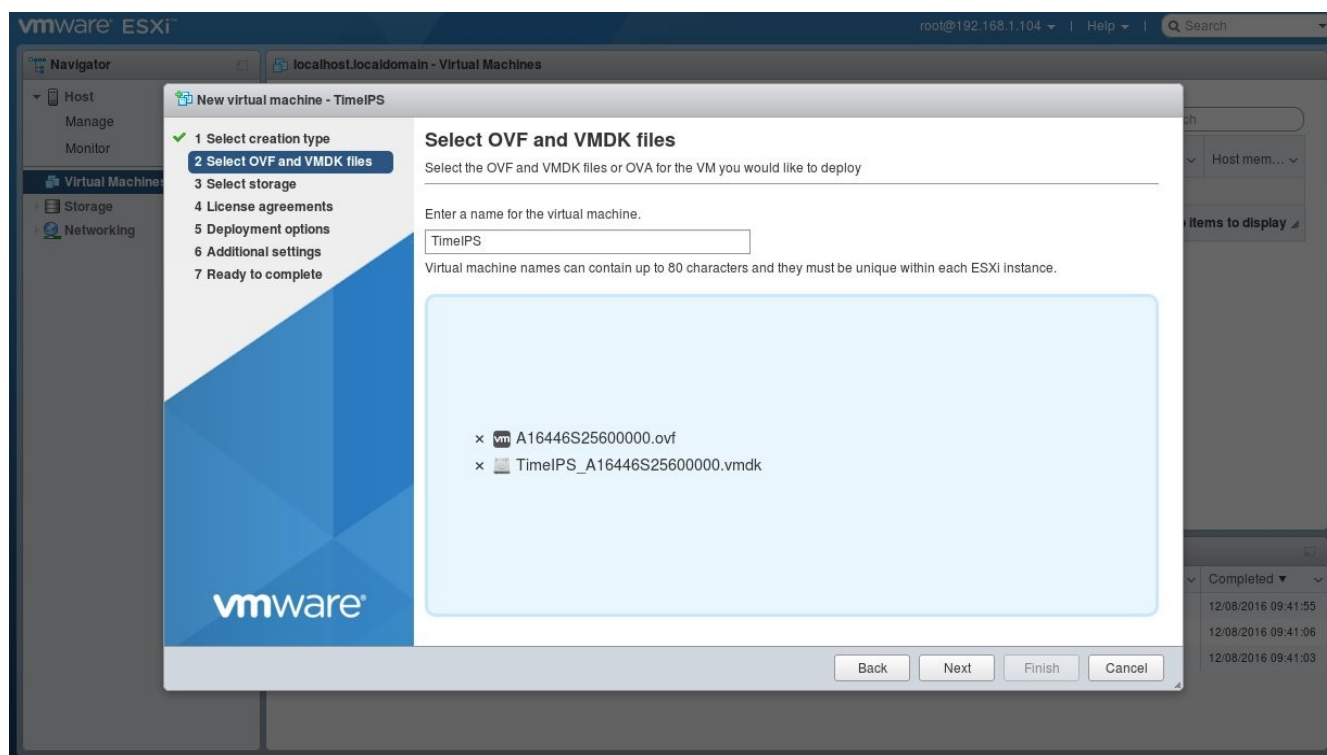
Select “Deploy a virtual machine from an OVF or OVA file.” Click Next.



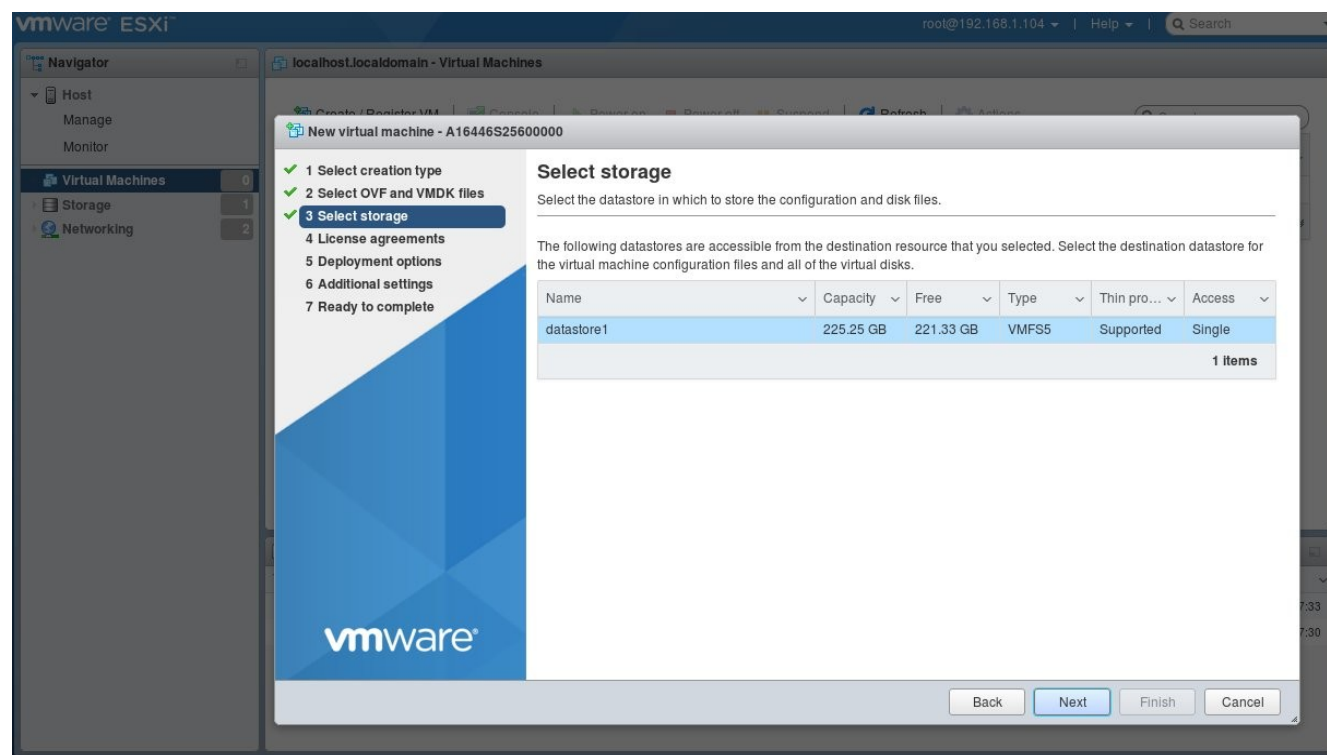
Provide a meaningful name, such as “TimeIPS,” for the virtual machine and select “Click to select file or drag/drop.”



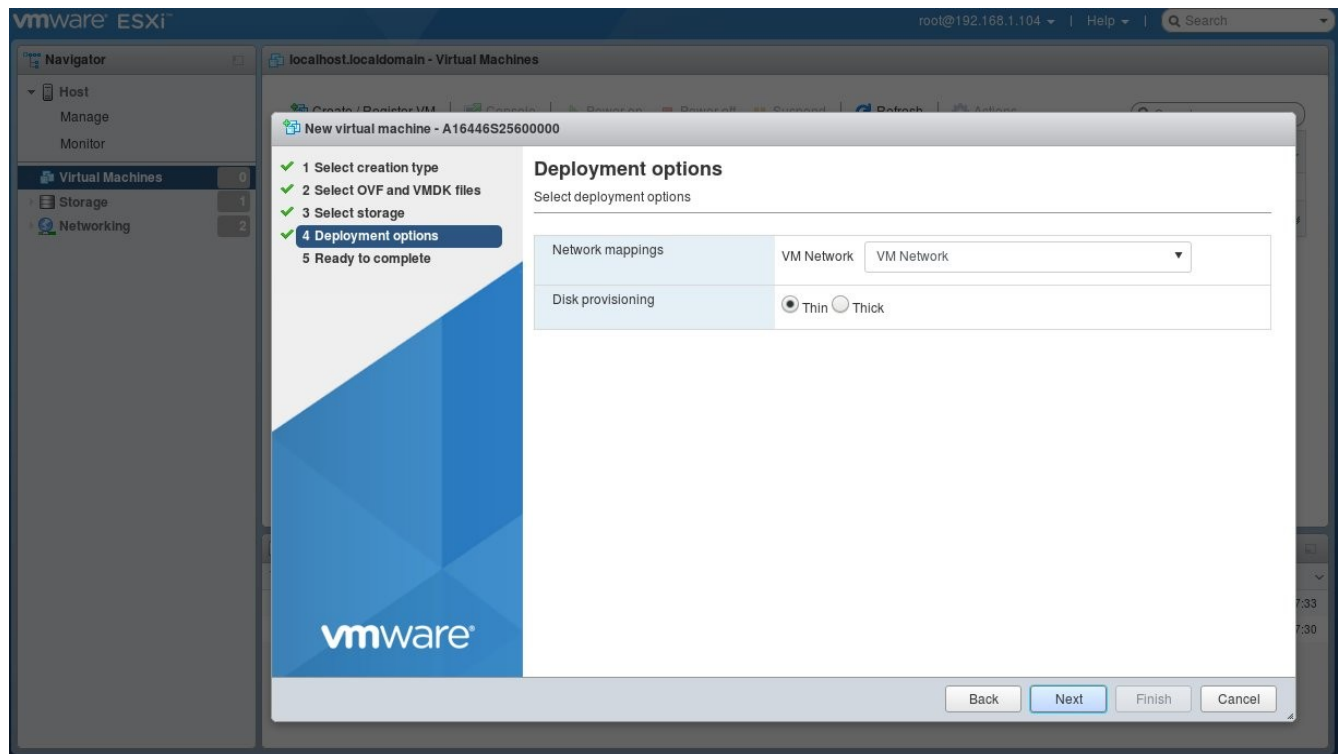
Navigate to the folder where you unzipped the file you downloaded. Select the <serial number>.ovf and the TimeIPS_<serial number>.vmdk file. Click Next.



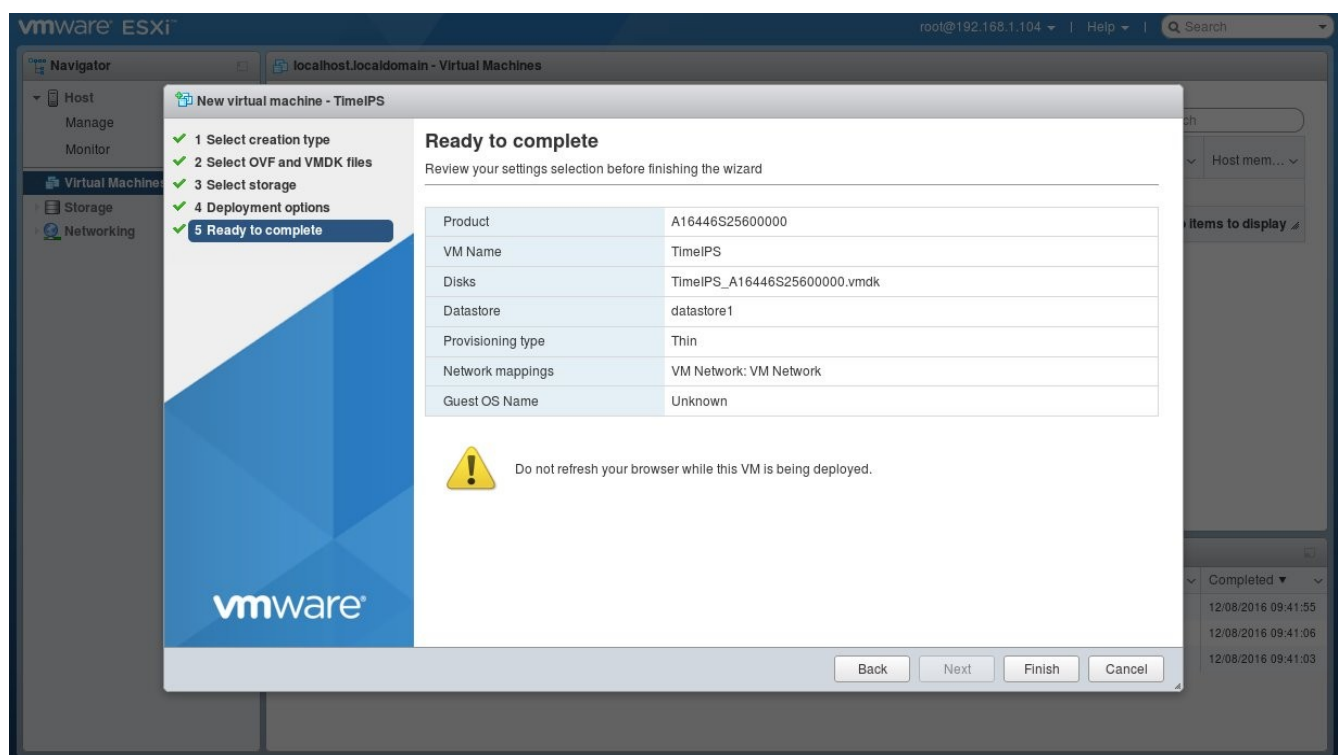
Select the appropriate data store for your ESXi host. Click Next.



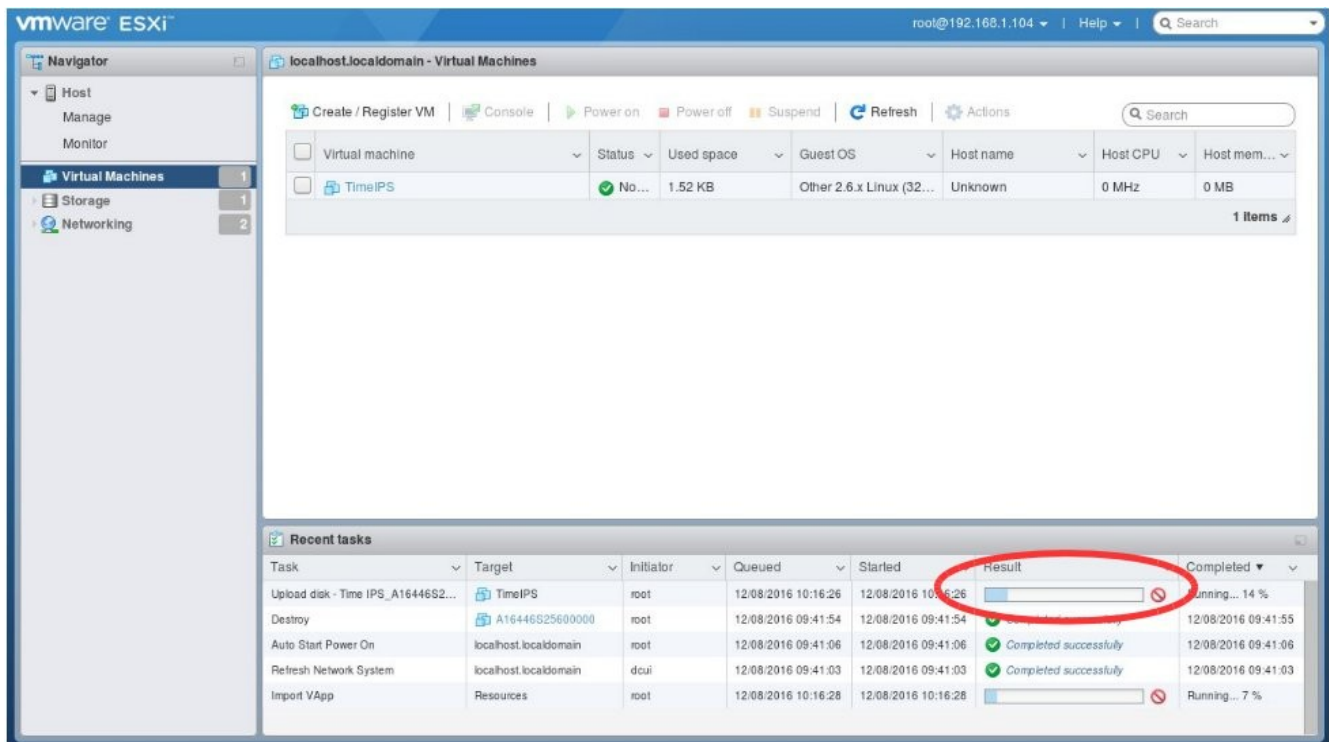
Specify the appropriate Network Mappings and Disk provisioning to suit your ESXi host. Click Next.



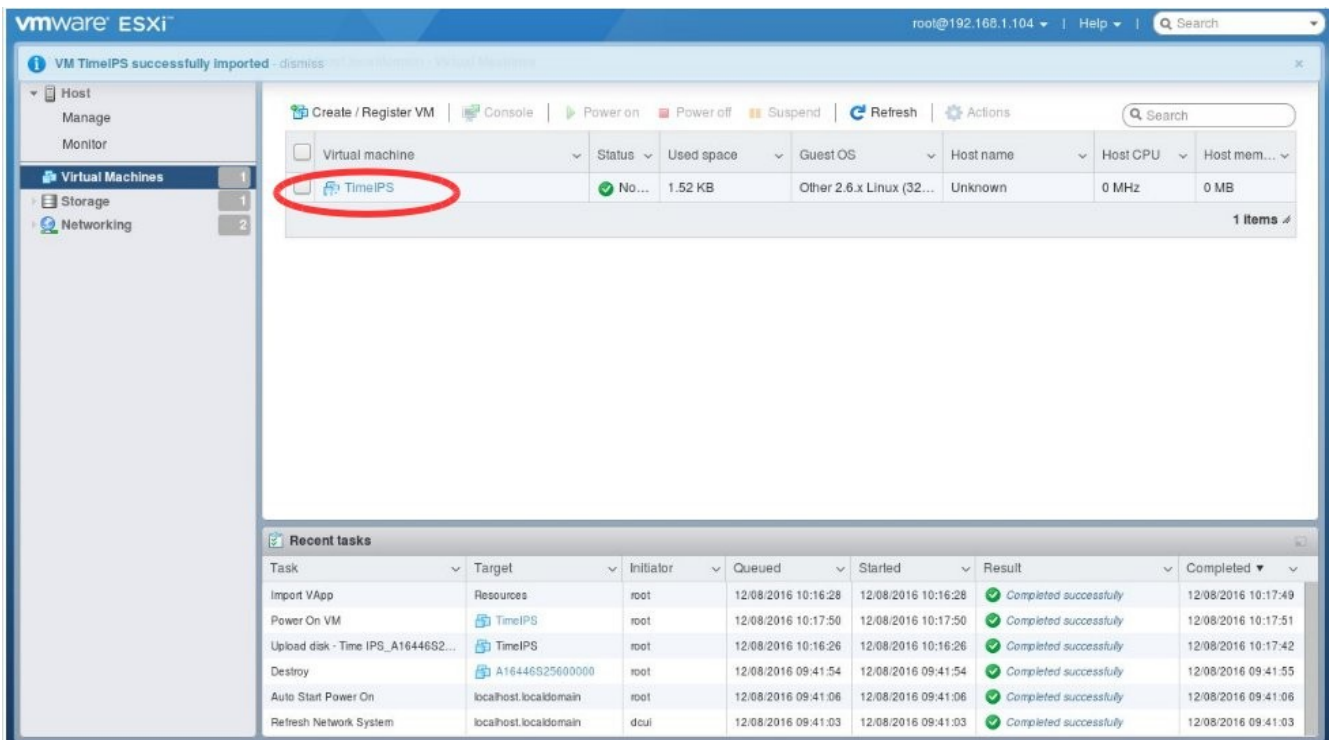
Verify the settings you have entered. If the settings are correct, click Finish.



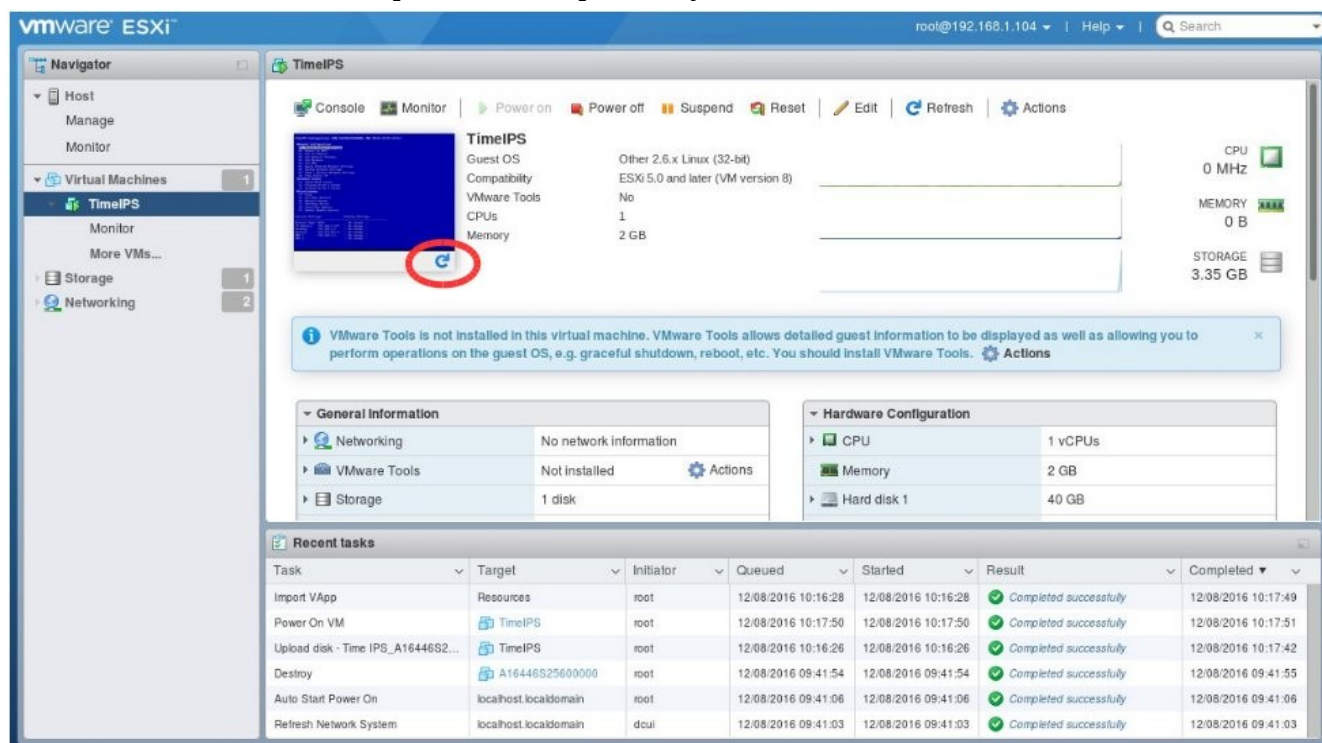
The vmdk file should begin uploading to your ESXi host.



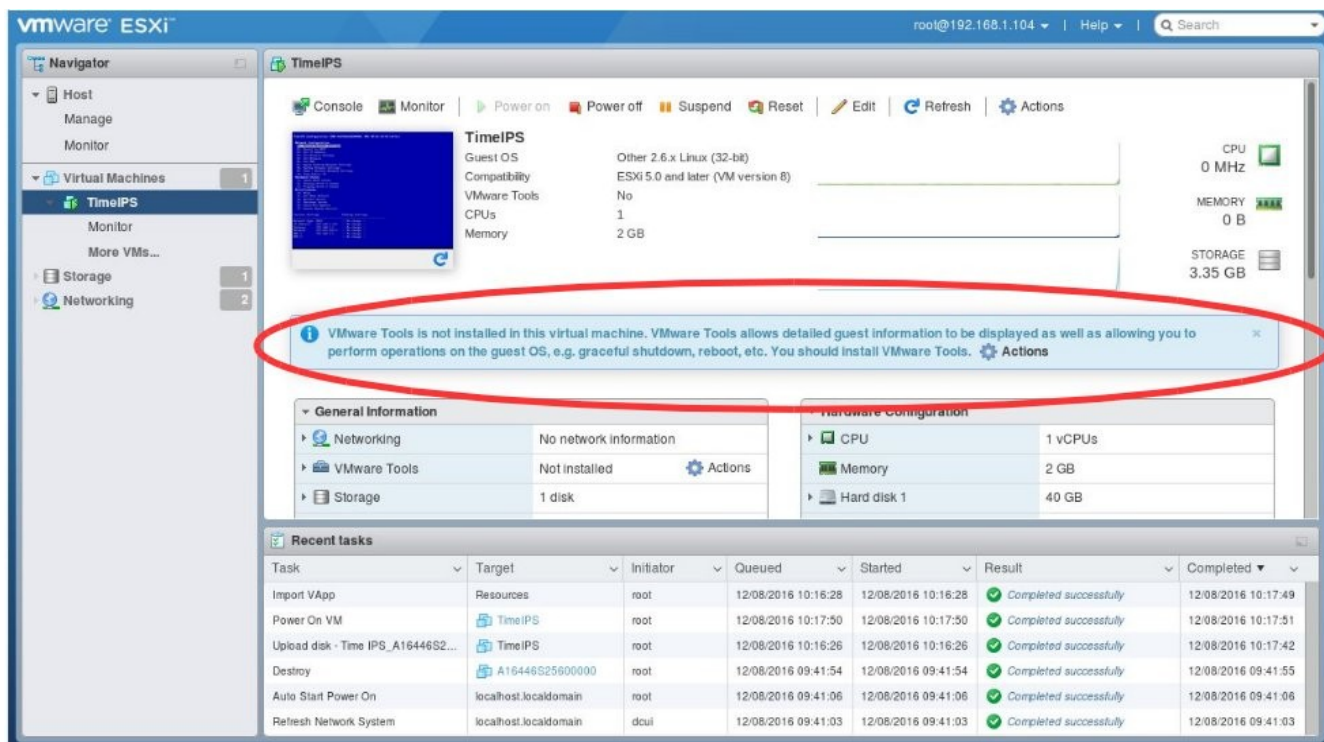
When the upload is complete, the virtual machine should launch or “power on” automatically. Click on the name you gave to the virtual machine.



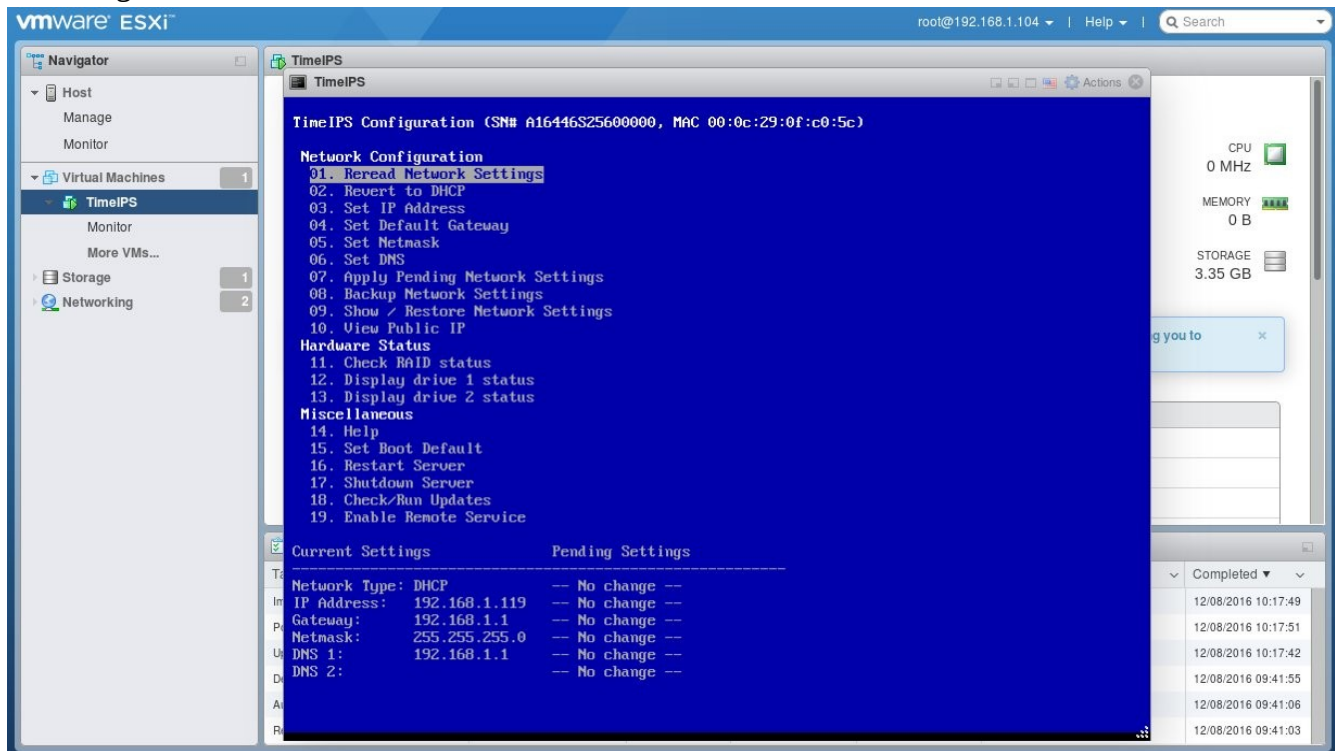
After the virtual machine completes its boot process, you should see a screen similar to this.



You might need to refresh the screenshot using the refresh icon in the lower right corner of the screenshot window. You may also see a dialogue message discussing installing VMware Tools on the virtual machine. The TimeIPS virtual machine is not compatible with VMware Tools. Please disregard the message and do not install VMware Tools on the virtual machine.



To enlarge the screenshot, simply click anywhere in the blue area. You should see something like the following.



Once the screenshot has been maximized (enlarged), you may interact with the virtual machine by once again clicking anywhere in the blue area. This will enable you to use a keyboard to select the various virtual machine menu options. When you are finished interacting with the virtual machine, you may minimize (shrink) the screenshot by clicking on the X in the upper right corner.

