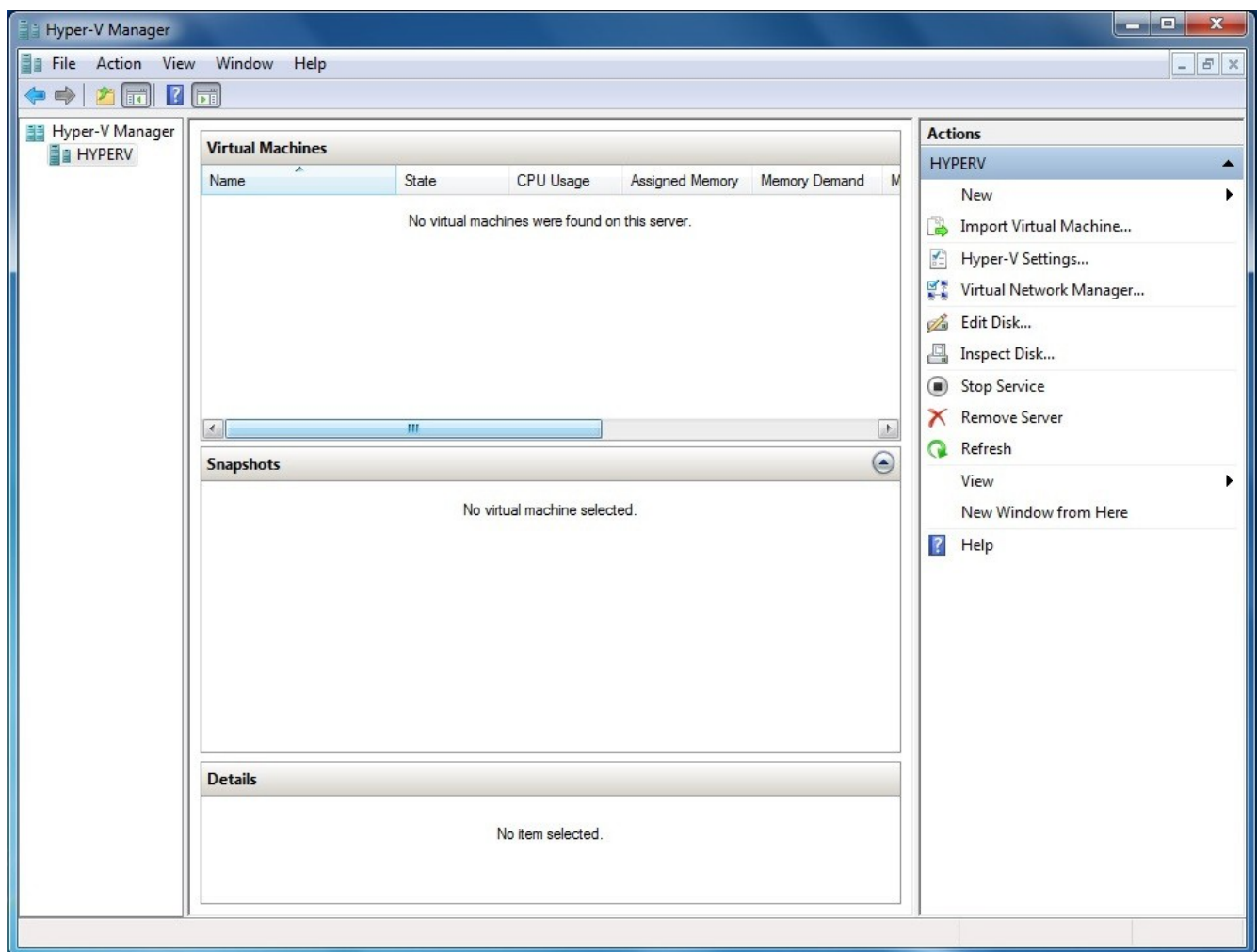


The deployment steps in this document were performed using Hyper-V Manager on Windows 7 Professional SP1 and Hyper-V Server 2008 R2 SP1. If you have a different version of either, the deployment steps may vary.

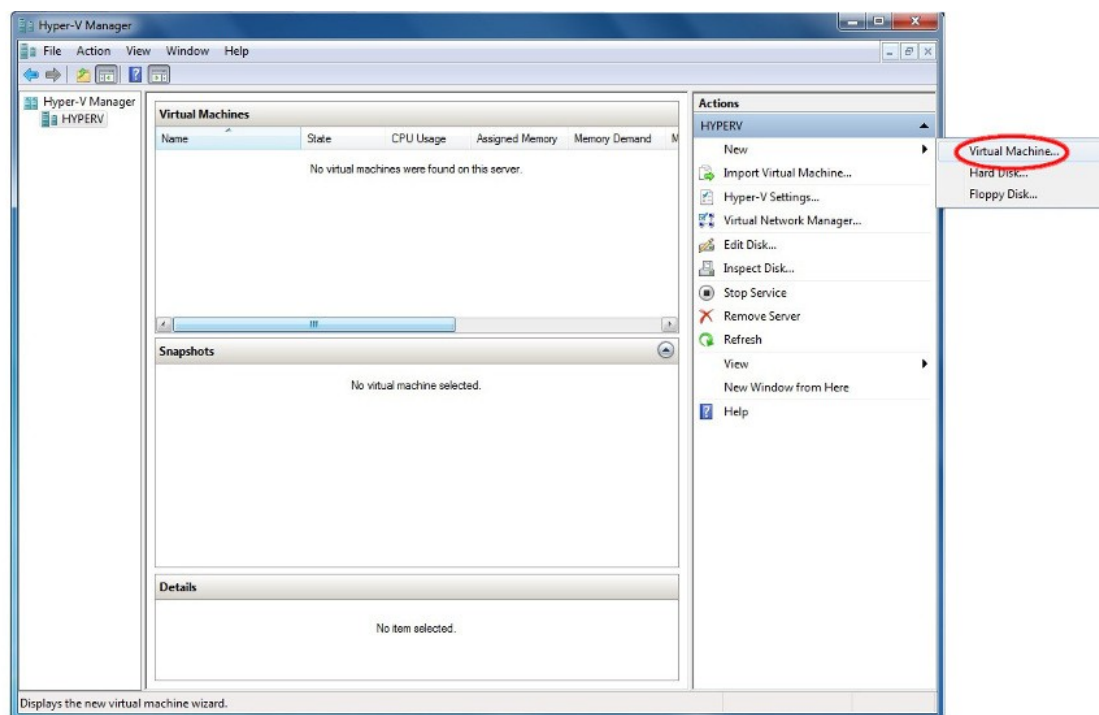
If you have not already obtained your virtual machine image file, please perform the following:

- Navigate to www.timeips.com/downloads
- Enter the access code you received via e-mail and click on Submit
- Right click on the link provided and select “Save Link As . . .”
- Unzip the file you just downloaded
- Copy the VHD file to your VM data store folder

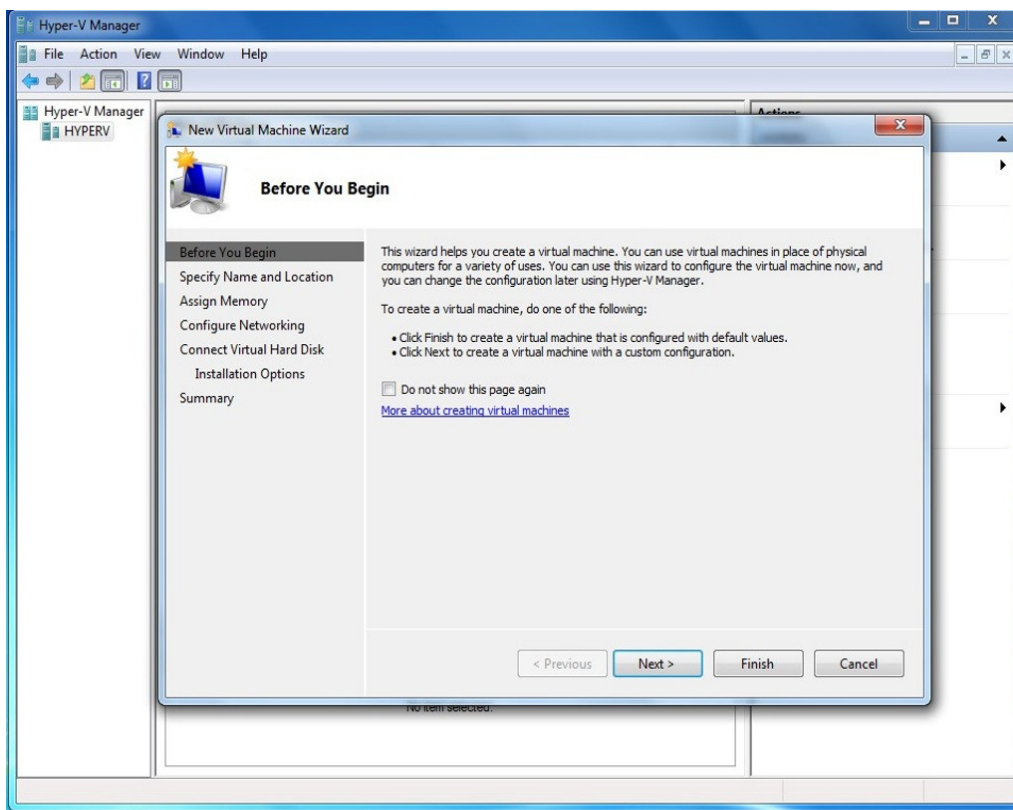
Open Hyper-V Manager. If you are using Hyper-V Manager on Windows 7, you should see a screen similar to the following.



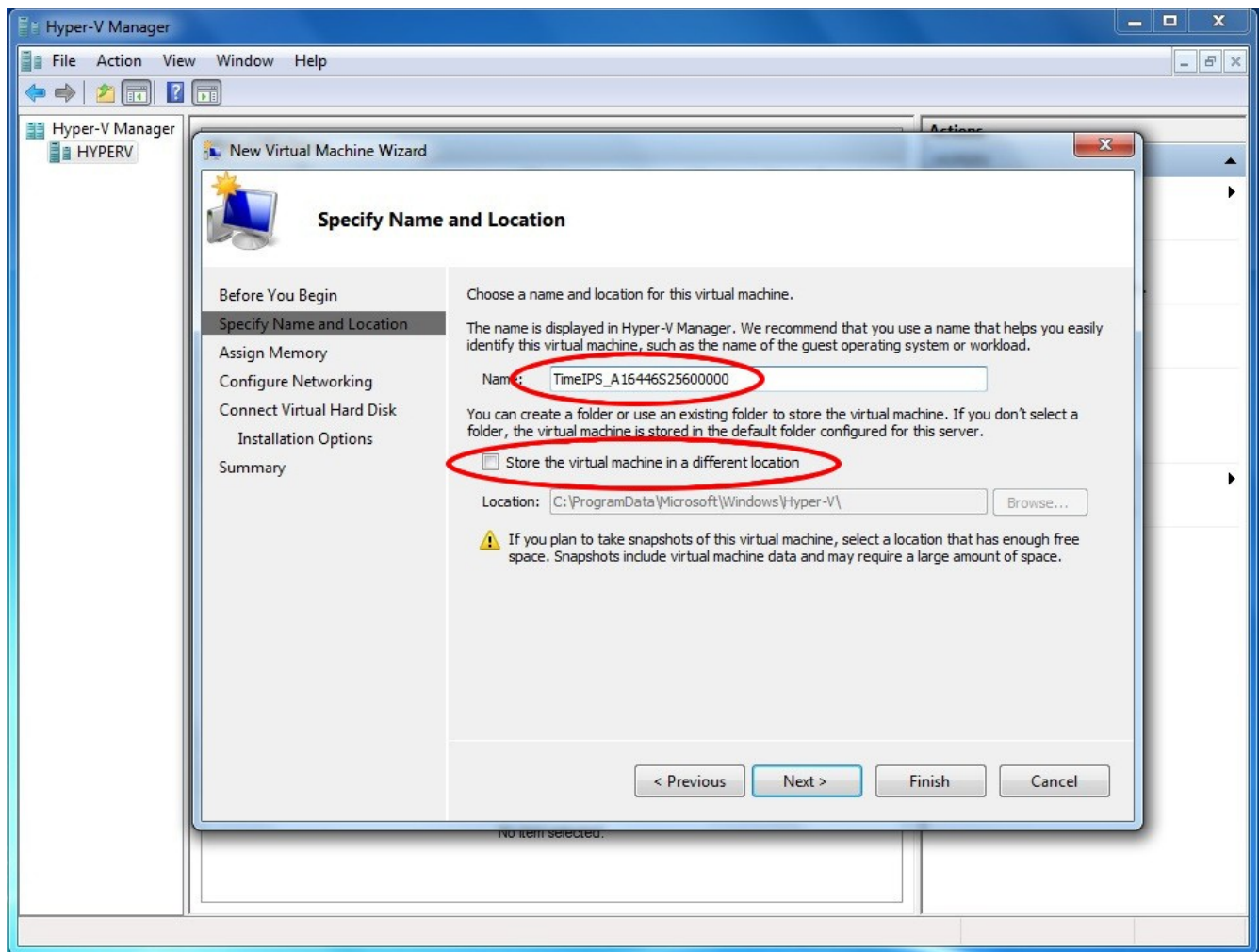
Select New → Virtual Machine from the menu on the right hand side of the screen.



The “New Virtual Machine Wizard” should appear.

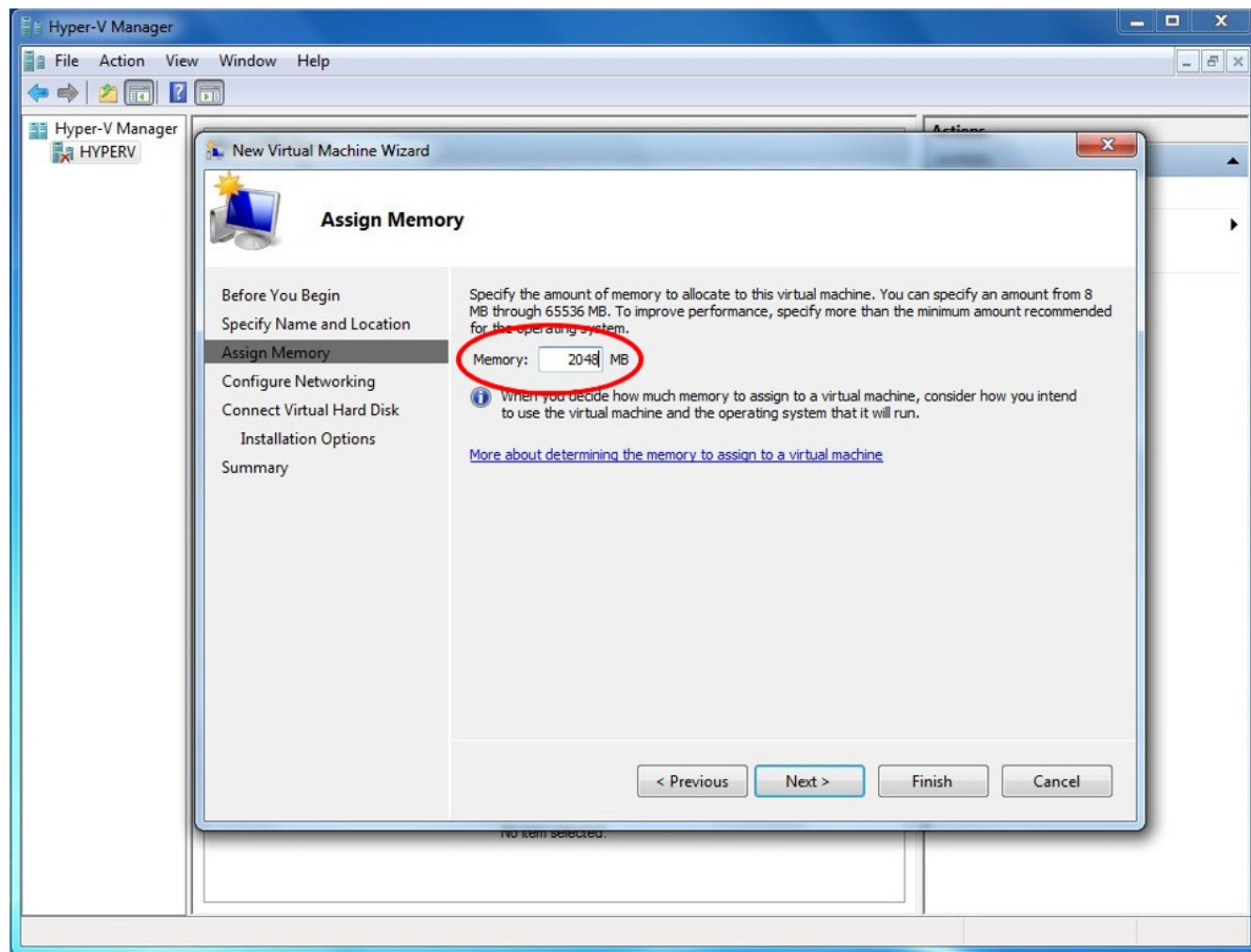


Click Next to create a new virtual machine with custom settings. Provide a meaningful name, such as TimeIPS_<serial number>, for the virtual machine. If you would like to store the VM somewhere other than the default location, check “Store the virtual machine in a different location” and click on Browse.



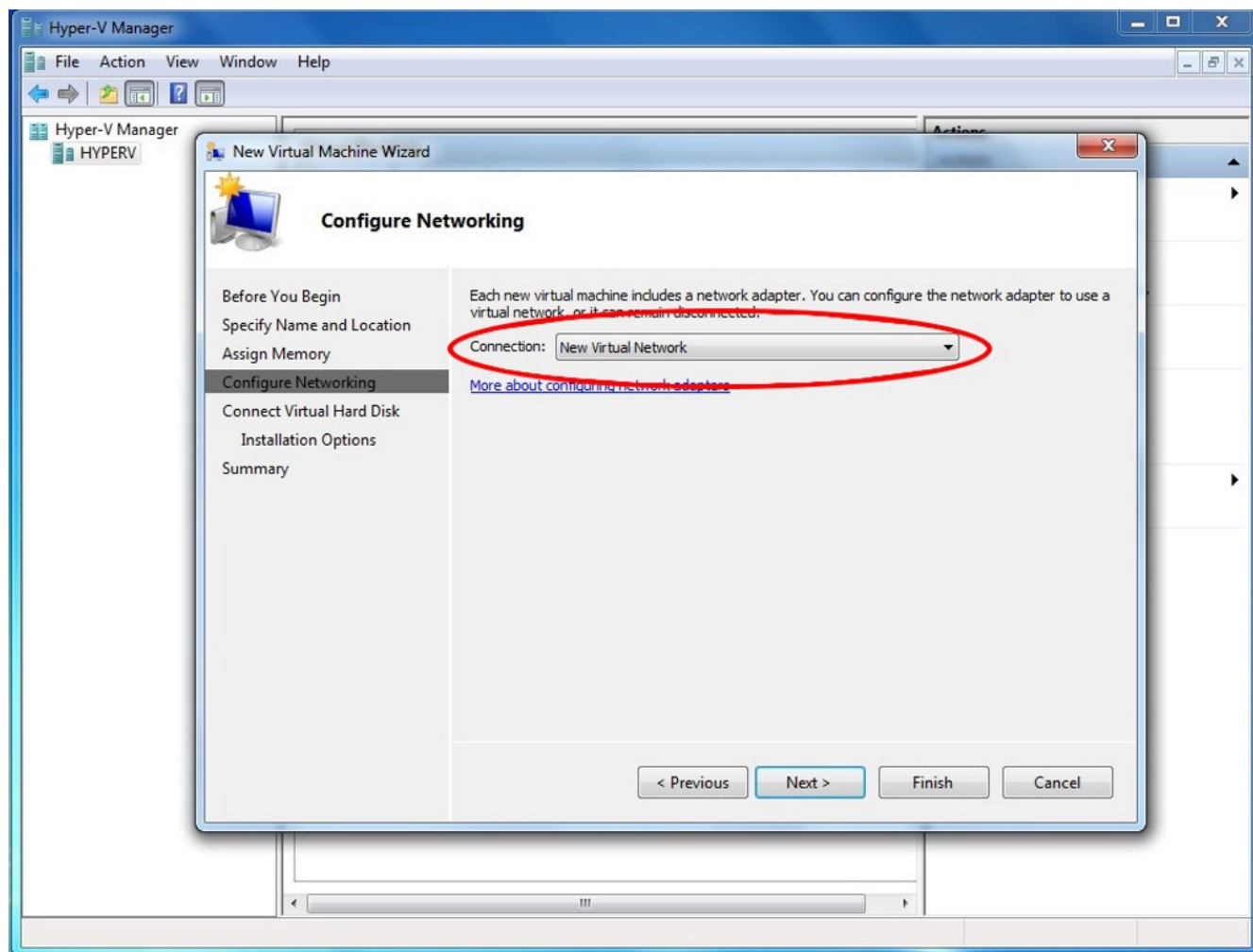
Click Next.

Specify the amount of system memory you would like to allocate to the VM. We recommend at least 2GB.



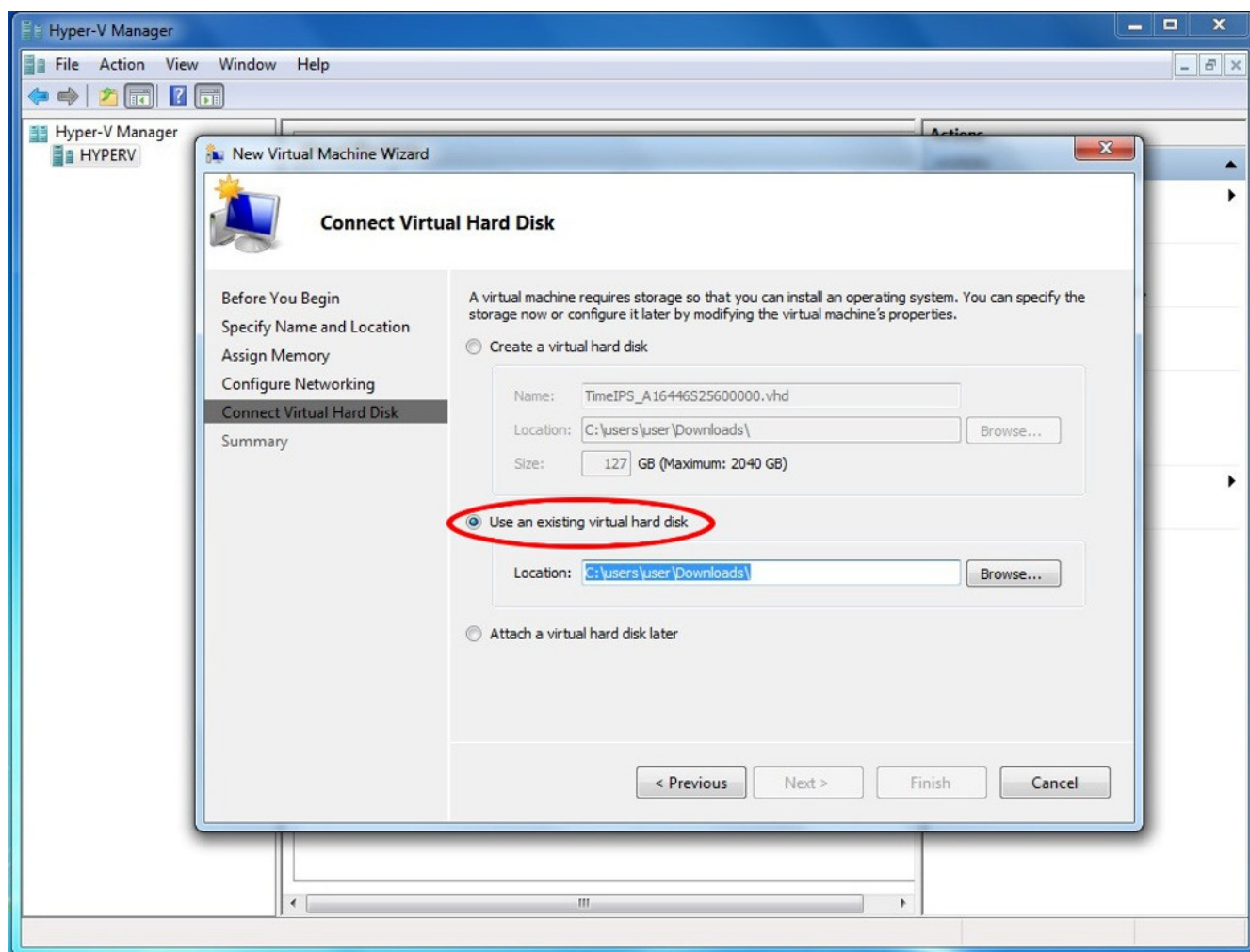
Click Next.

Select the appropriate virtual network for the VM.



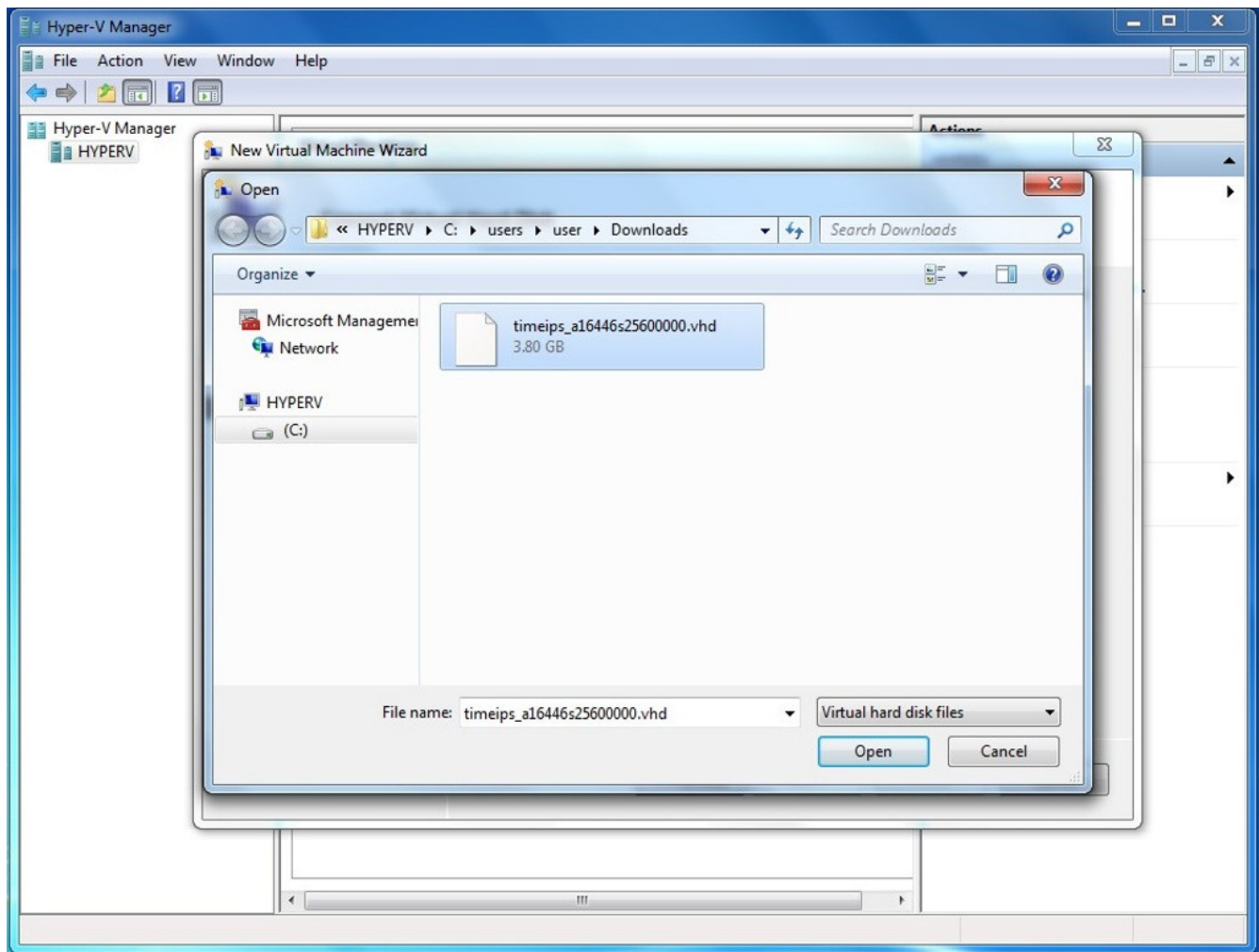
Click Next.

Select “Use an existing virtual hard disk” and click Browse.



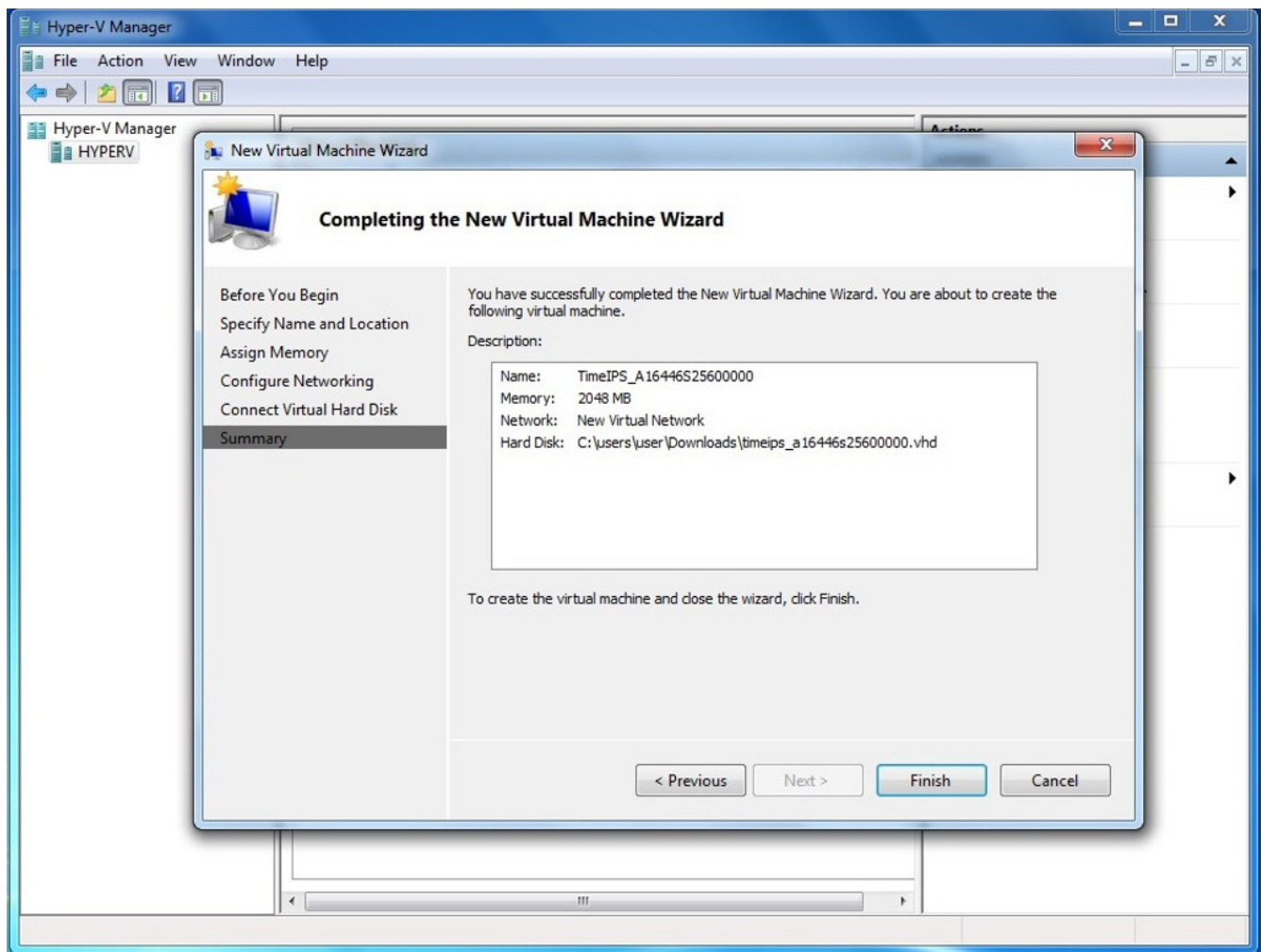
Navigate to your VM data store folder.

Select the TimeIPS_<serial number>.vhd file and click Open.



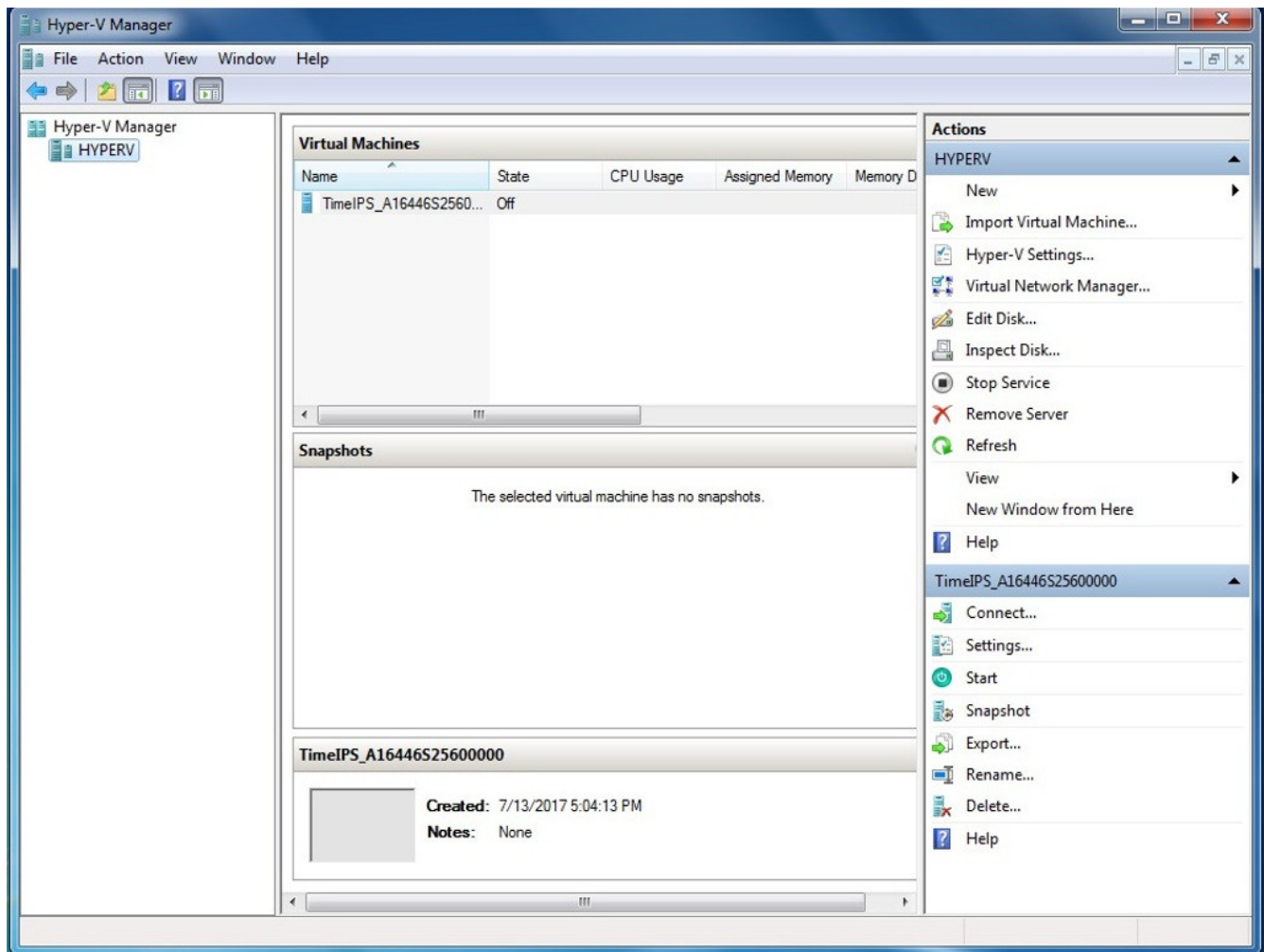
Click Next.

Verify the settings for the new virtual machine.

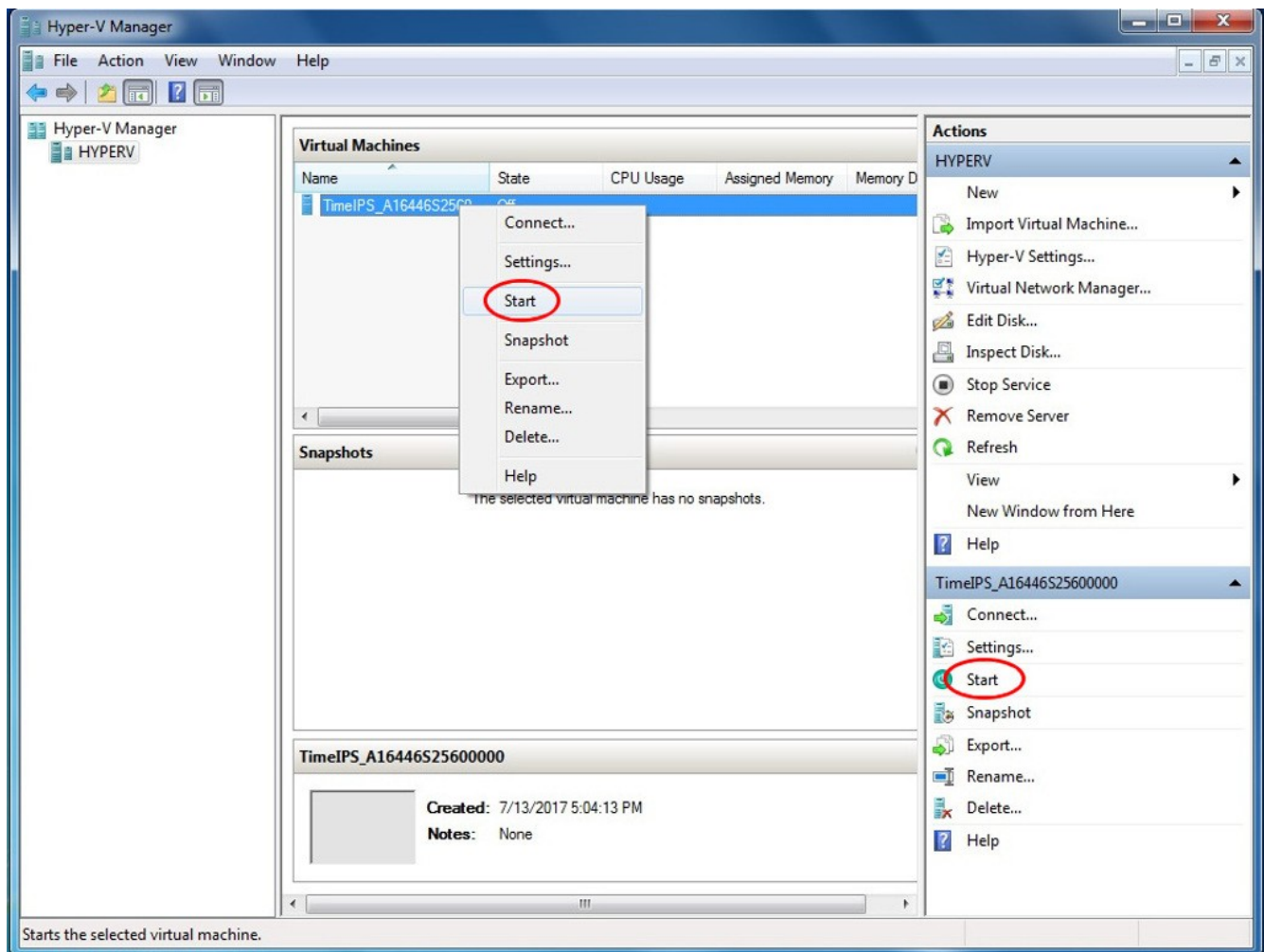


If the settings are correct, click Finish.

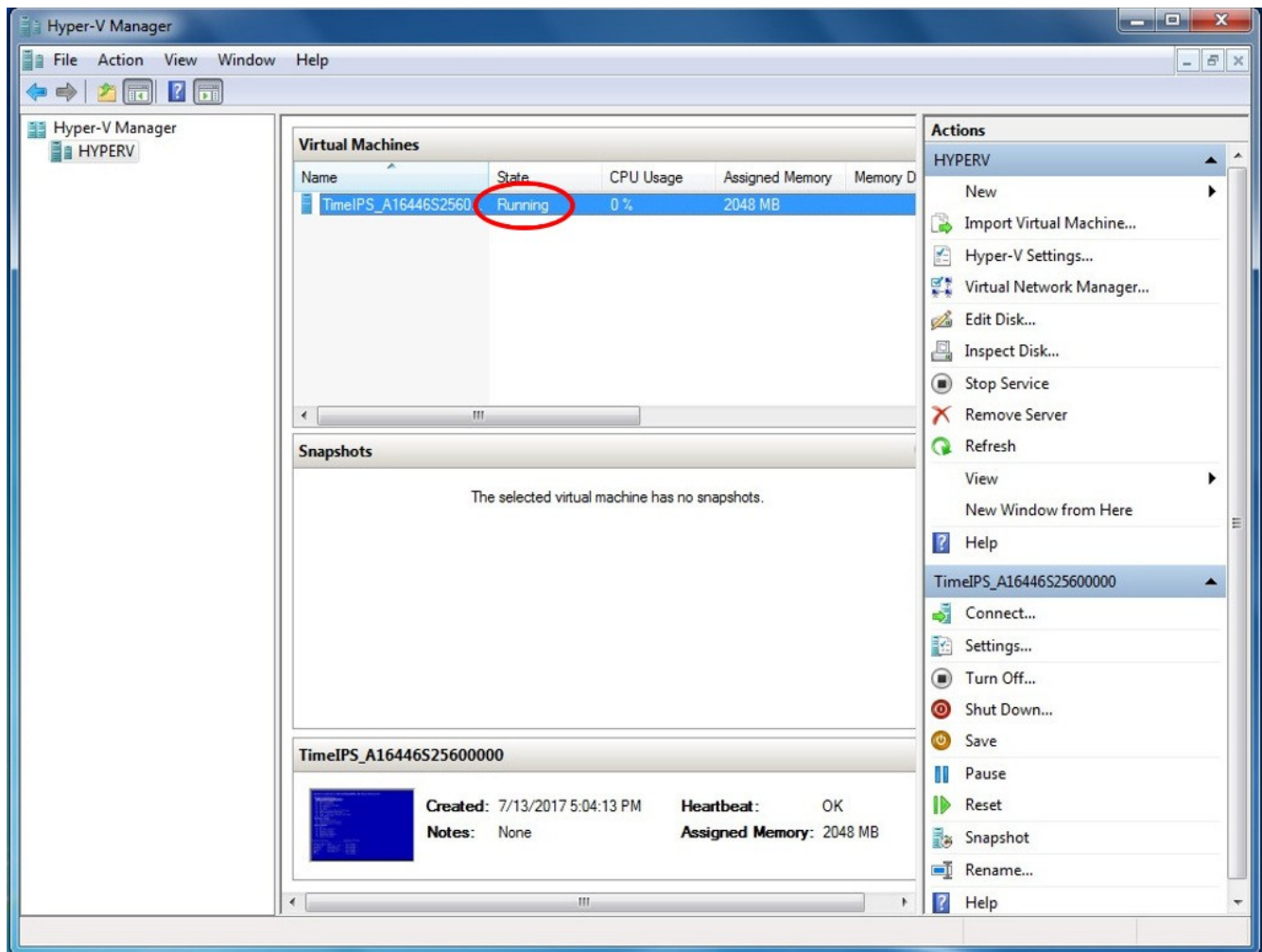
Following a few processing windows, the new virtual machine should be listed under Virtual Machines in the center section of Hyper-V Manager.



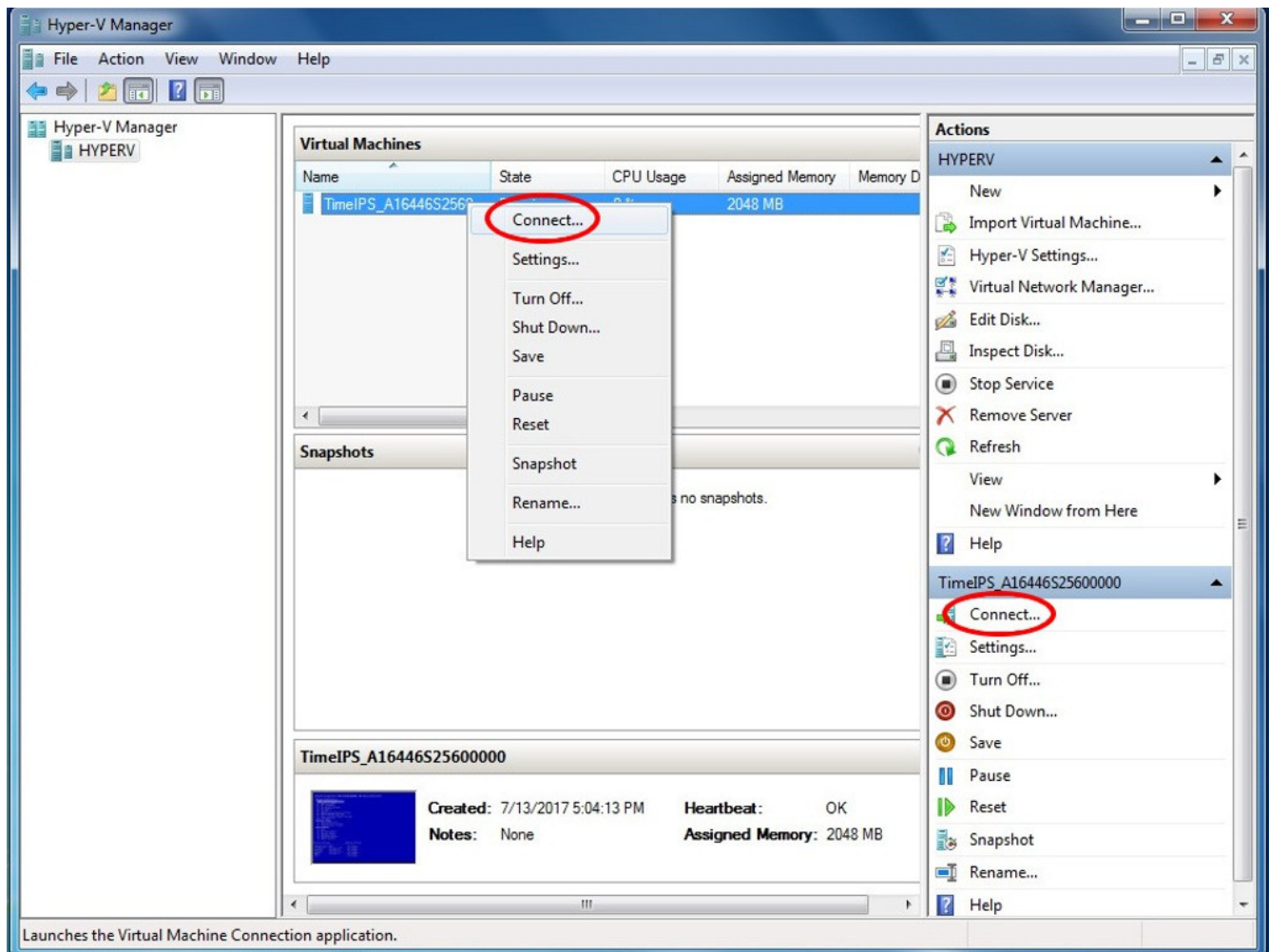
To start the virtual machine, right-click on the name of the VM under Virtual Machines and select Start or select Start under the virtual machine heading in the lower portion of the menu on the right side of the screen.



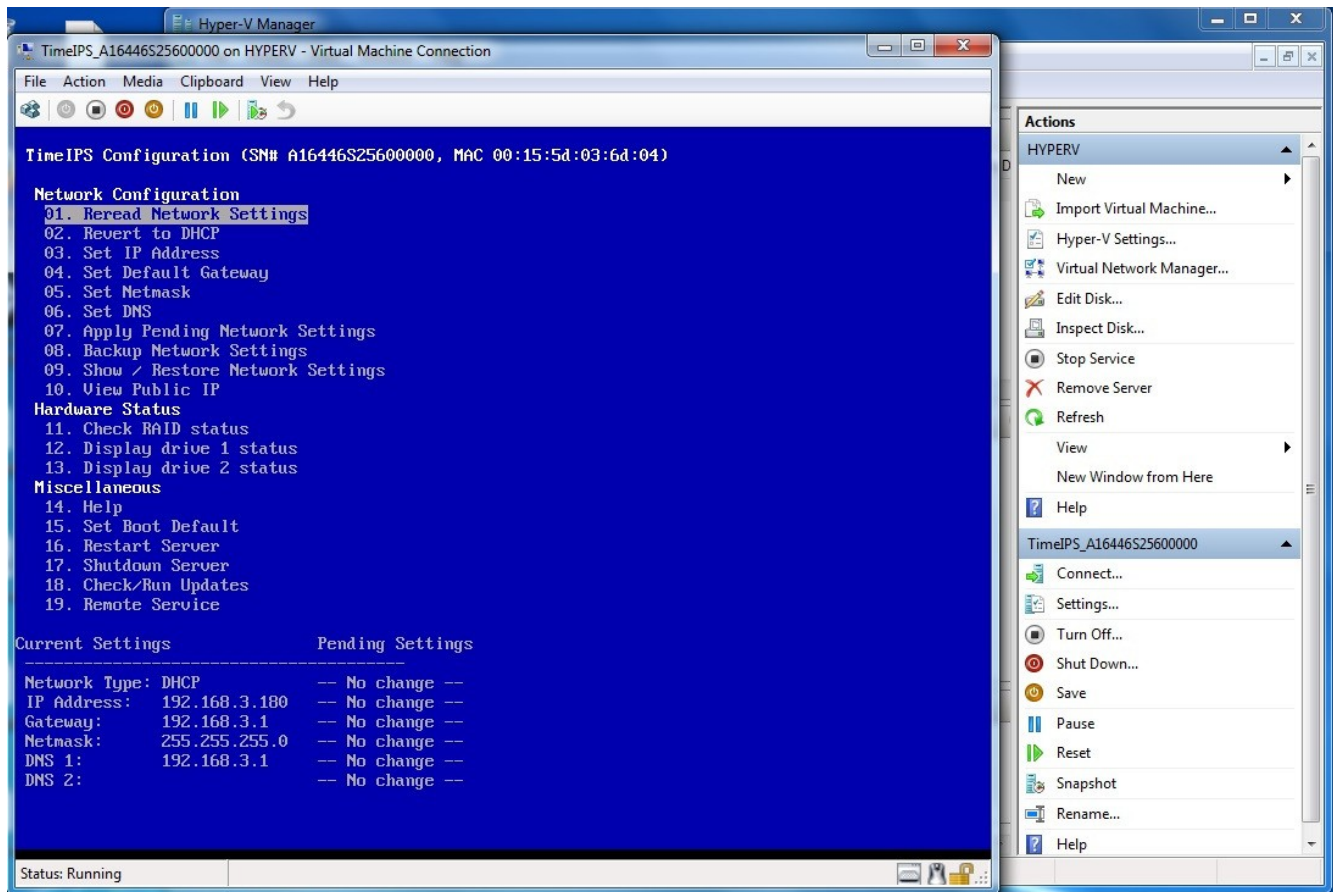
The state of the virtual machine should change to Running.



To interact with the virtual machine, right click on the name of the VM under Virtual Machines and select Connect or select Connect under the virtual machine heading in the lower portion of the menu on the right side of the screen.



A new window should open and look similar to the following.



You may interact with the virtual machine by using a keyboard to select the various virtual machine menu options. When you are finished interacting with the virtual machine, you may close the window by clicking on the X in the upper right corner.